



HAL
open science

Optimization of a Synthetic Step Using a Design of Experiments Approach: Application to a Late-Stage Radiolabeling Method by Aluminium-[¹⁸F]Fluoride Coordination

Carine San, Meriem Beddek, Fabienne Dioury, Nicolas Vignal, Benoit Hosten, Maurice Pillet, Laure Sarda-Mantel, Marc Port

► To cite this version:

Carine San, Meriem Beddek, Fabienne Dioury, Nicolas Vignal, Benoit Hosten, et al.. Optimization of a Synthetic Step Using a Design of Experiments Approach: Application to a Late-Stage Radiolabeling Method by Aluminium-[¹⁸F]Fluoride Coordination. EFMC-ISMIC 2022 _ XXVII EFMC International Symposium on Medicinal Chemistry, Sep 2022, Nice, France. hal-03776858

HAL Id: hal-03776858

<https://cnam.hal.science/hal-03776858v1>

Submitted on 14 Sep 2022

HAL is a multi-disciplinary open access archive for the deposit and dissemination of scientific research documents, whether they are published or not. The documents may come from teaching and research institutions in France or abroad, or from public or private research centers.

L'archive ouverte pluridisciplinaire **HAL**, est destinée au dépôt et à la diffusion de documents scientifiques de niveau recherche, publiés ou non, émanant des établissements d'enseignement et de recherche français ou étrangers, des laboratoires publics ou privés.

Optimization of a Synthetic Step Using a Design of Experiments Approach: Application to a Late-Stage Radiolabeling Method by Aluminium- $[^{18}\text{F}]$ Fluoride Coordination

Carine San^{1,2*}, Meriem Beddek², Fabienne Dioury¹, Nicolas Vignal², Benoît Hosten², Maurice Pillet⁴, Laure Sarda-Mantel³, Marc Port¹

1) Conservatoire National des Arts et Métiers (Le Cnam), HESAM Université, Laboratoire Génomique, Bioinformatique, Chimie Moléculaire (GBCM), EA7528, Paris, France

2) AP-HP. Nord - Université Paris Cité, Unité Claude Kellershohn, Institut de Recherche Saint-Louis, Hôpital Saint-Louis, Paris, France

3) AP-HP. Nord - Université Paris Cité, Service de Médecine Nucléaire, Hôpital Lariboisière, Paris, France

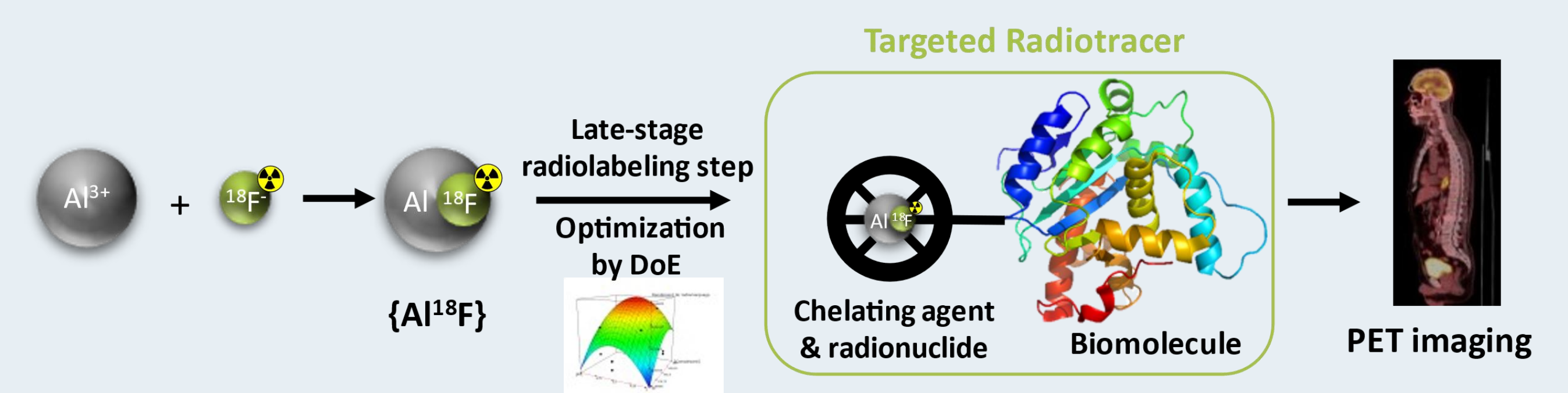
4) Université Savoie Mont-Blanc, Laboratoire SYMME, EA 4144, Annecy, France

* Correspondence: carine.san@lecnam.net

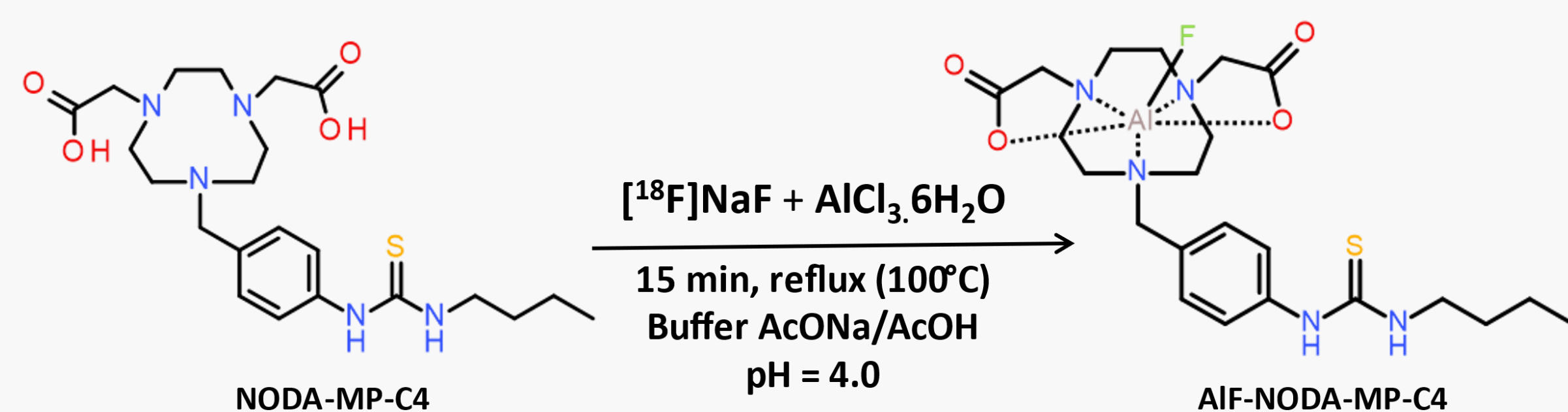
Introduction

Fluorine-18 (^{18}F) is the most favorable positron emitter for tumor imaging. However, direct ^{18}F labeling of biomolecules is challenging as it involves multiple steps and stringent conditions that are generally not suitable for biomolecules whose integrity may be altered. Over the past decade, an elegant new approach has been developed by coordination of aluminum fluoride $\{\text{Al}^{18}\text{F}\}$ at late stage of synthetic process.

This work presents an optimization of the radiolabeling step by using a Design of Experiments (DoE) approach.



1. Define the objectives



- Optimize the radiolabeling yield
- Minimize the number of experiments and the costs
- Improve the worker radioprotection

2. Identify the influencing parameters to study*

Parameters	Min	Max
pH	4	5
[NODA-MP-C4]	50	550
NODA-MP-C4/Al ratio	1:1	3:1

Fixed parameters:

- Temperature: reflux (100°C)
- Duration: 15 min
- Volume: 110 μL
- No co-solvent

*Based on literature and our previous work:
 • McBride et al, J. Nucl. Med. 2009, 50 (6), 991–998.
 • Fersing, C. et al, Molecules 2019, 24 (16), 2866.
 • Shetty, D. et al, Bioorg. Med. Chem. 2012, 20 (19), 5941–5947.
 • San, C. et al, 28th Young Research Fellows Meeting; Paris, 2021

3. Plan the DoE and collect experimental data

N°	NODA-MP-C4/Al ratio	[NODA-MP-C4] (μM)	pH	Radiolabeling yield (%)**	
1	1.4:1	156	4.2	26.6	53.8
2	1.4:1	156	4.8	45.2	51.8
3	1.4:1	450	4.2	75.6	74.8
4	1.4:1	450	4.8	75.0	72.3
5	2.6:1	156	4.2	21.8	26.4
6	2.6:1	156	4.8	12.5	19.7
7	2.6:1	450	4.2	30.0	67.9
8	2.6:1	450	4.8	41.7	68.9
9	2:1	303	4.5	70.8	66.7
10	2:1	303	4.5	56.1	62.8
11	2:1	303	4.5	55.8	62.6
12	2:1	303	4.5	70.0	64.4
13	2:1	303	4.5	72.4	59.4
14	2:1	303	4.5	70.5	71.1
15	1:1	303	4.5	70.1	74.7
16	3:1	303	4.5	49.6	60.6
17	2:1	55	4.5	1.7	13.6
18	2:1	550	4.5	63.6	73.9
19	2:1	303	4	15.9	19.7
20	2:1	303	5	18.2	26.7

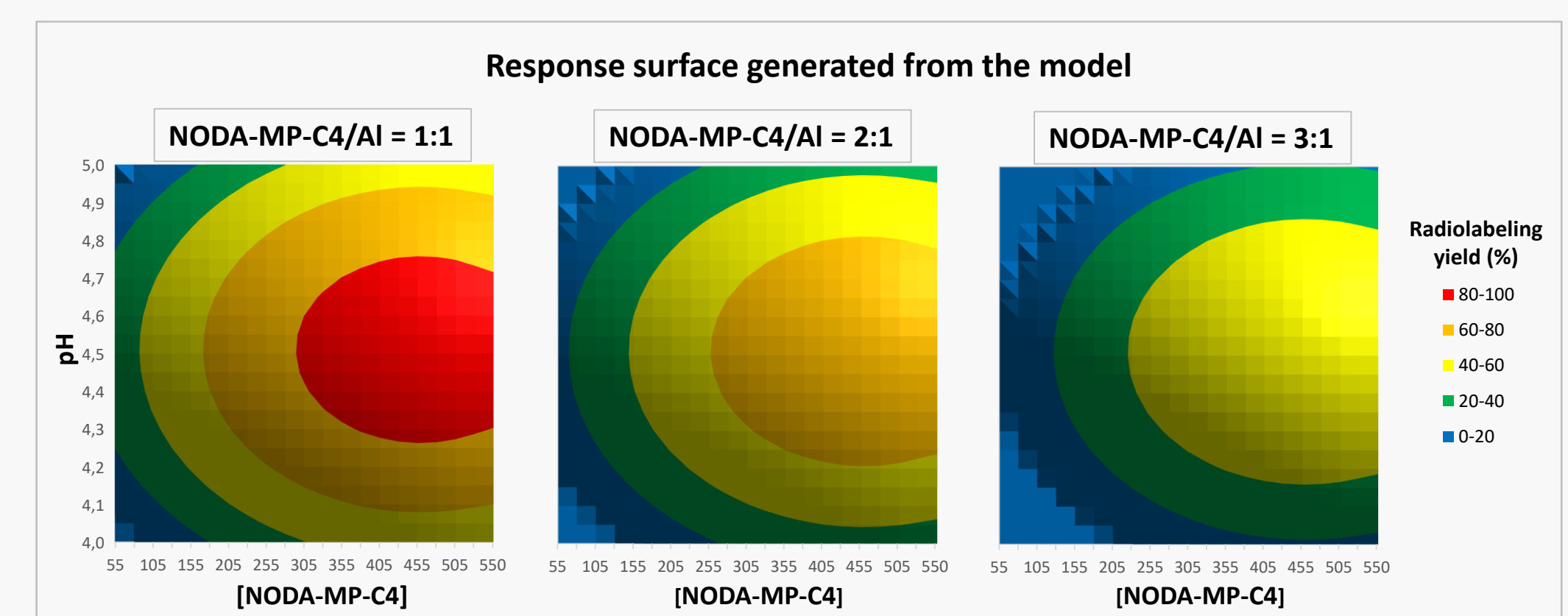
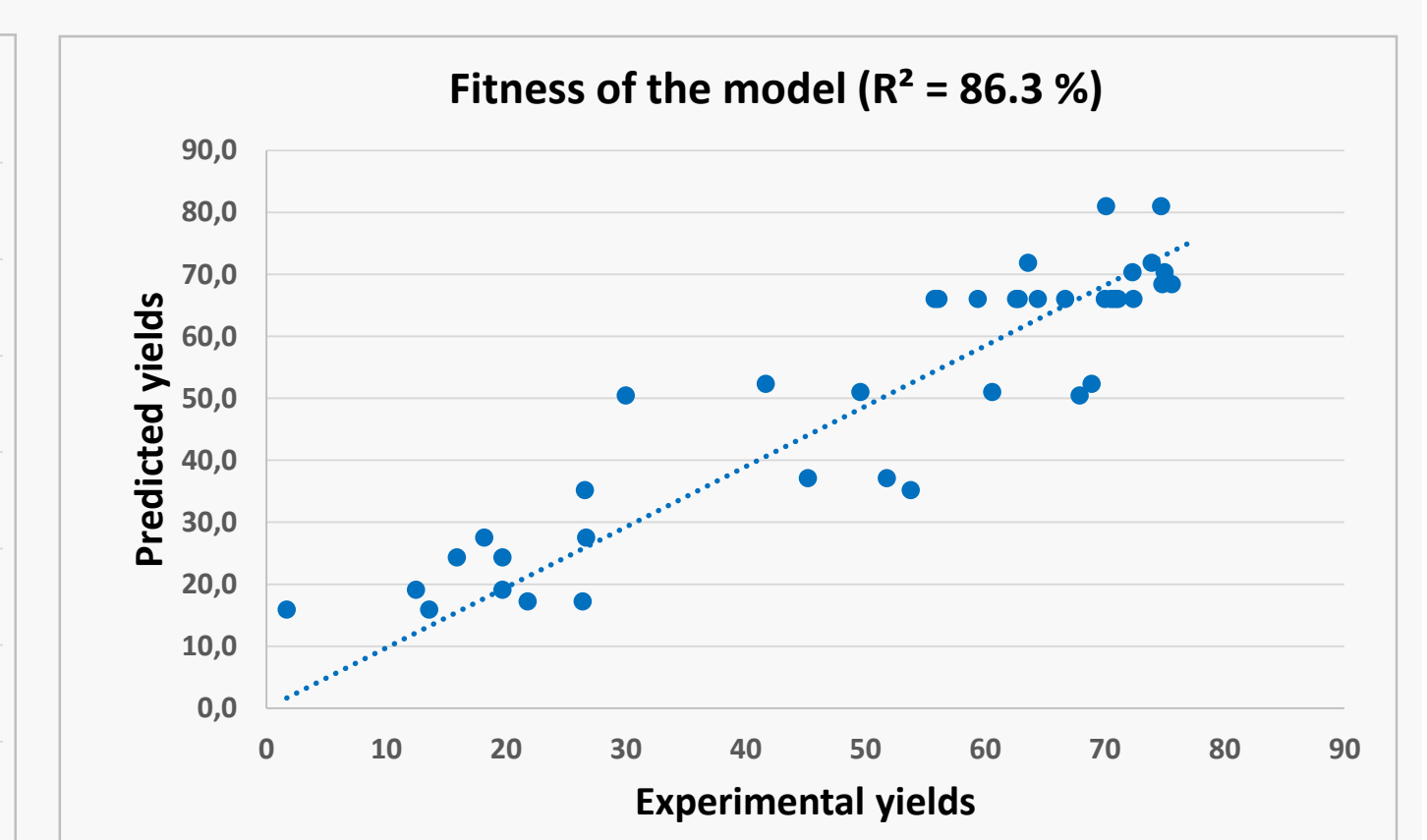
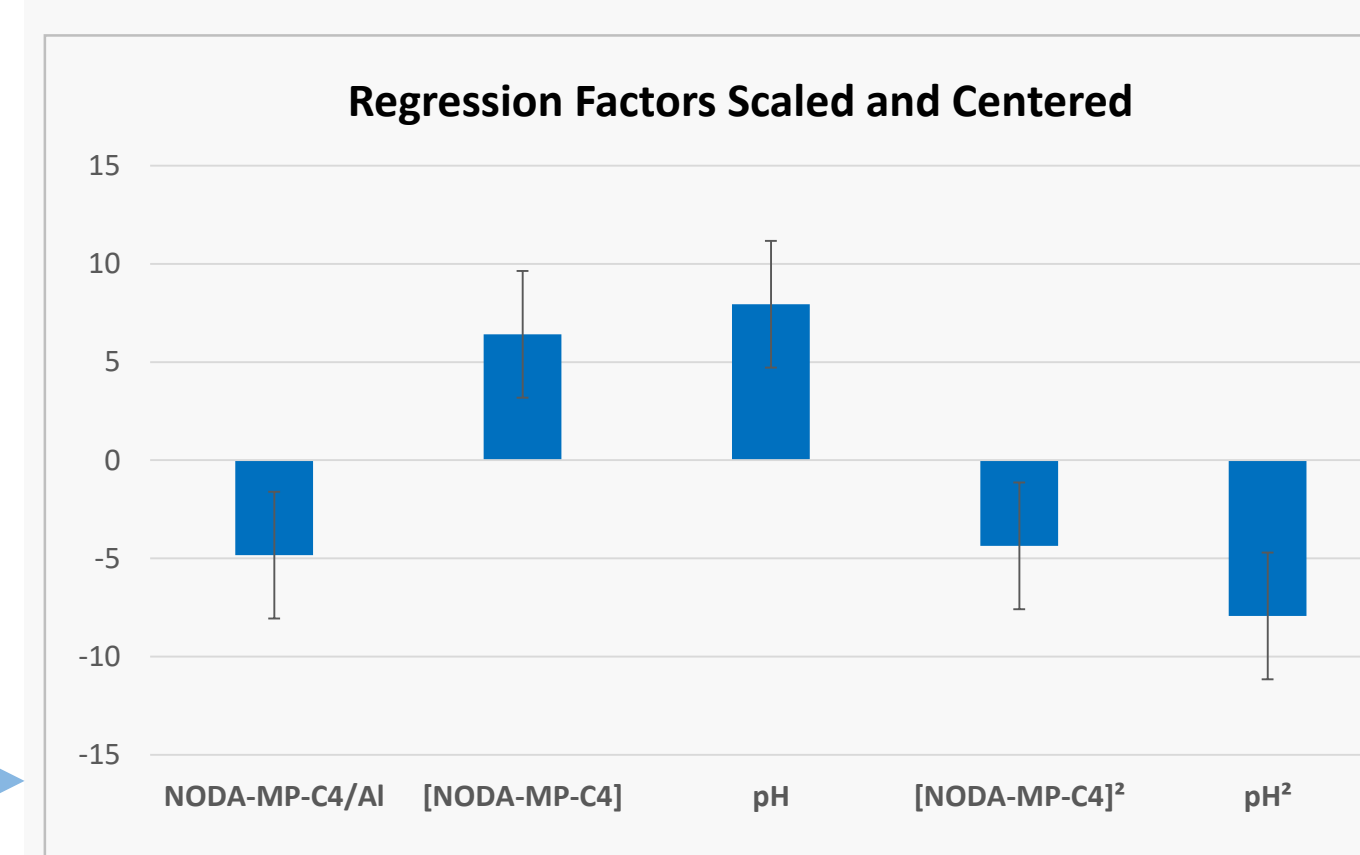
DoE generated with Ellistat software v.6.8

** Determined by radio-HPLC

4. Obtain the model

Radiolabeling yield =

$$- 3234 - 14,99 \times \text{NODA-MP-C4/Al} + 0,3316 \times [\text{NODA-MP-C4}] + 1477 \times \text{pH} - 0,0003614 \times [\text{NODA-MP-C4}]^2 - 160,4 \times \text{pH}^2$$



5. Validate the model: quality of the prediction

1st test : conditions not tested in the DoE

- pH = 4.3
 - [NODA-MP-C4] = 223 μM
 - NODA-MP-C4/Al = 1.8:1
- Radiolabeling yield **predicted** = 51 %
 Radiolabeling yield **obtained** = 62 \pm 5 % (n = 2)

2nd test : optimal conditions

- pH = 4.5
 - [NODA-MP-C4] = 464 μM
 - NODA-MP-C4/Al = 1:1
- Radiolabeling yield **predicted** = 90 %
 Radiolabeling yield **obtained** = 78 \pm 2 % (n = 3)

Conclusion

Optimization was performed in **45 tests** representing **7 days** of experimentation. With the optimized parameters, the radiolabeled complex was obtained with high and reproducible radiolabeling yield (**78 \pm 2 %, n = 3**).