



HAL
open science

POD-DEIM Model Order Reduction in the Case of Damaging RC Structures Subjected to Earthquakes

Bastien Bodnar, Fabrice Gatuingt, Frédéric Ragueneau, Jean-François Deü,
Walid Larbi, Magdalini Titirla

► **To cite this version:**

Bastien Bodnar, Fabrice Gatuingt, Frédéric Ragueneau, Jean-François Deü, Walid Larbi, et al.. POD-DEIM Model Order Reduction in the Case of Damaging RC Structures Subjected to Earthquakes. JJCAB2022. 12ème Journées Jeunes Chercheurs en Acoustique Vibrations et Bruit, Nov 2022, Lyon, France. hal-04050207v2

HAL Id: hal-04050207

<https://cnam.hal.science/hal-04050207v2>

Submitted on 31 Mar 2023

HAL is a multi-disciplinary open access archive for the deposit and dissemination of scientific research documents, whether they are published or not. The documents may come from teaching and research institutions in France or abroad, or from public or private research centers.

L'archive ouverte pluridisciplinaire **HAL**, est destinée au dépôt et à la diffusion de documents scientifiques de niveau recherche, publiés ou non, émanant des établissements d'enseignement et de recherche français ou étrangers, des laboratoires publics ou privés.

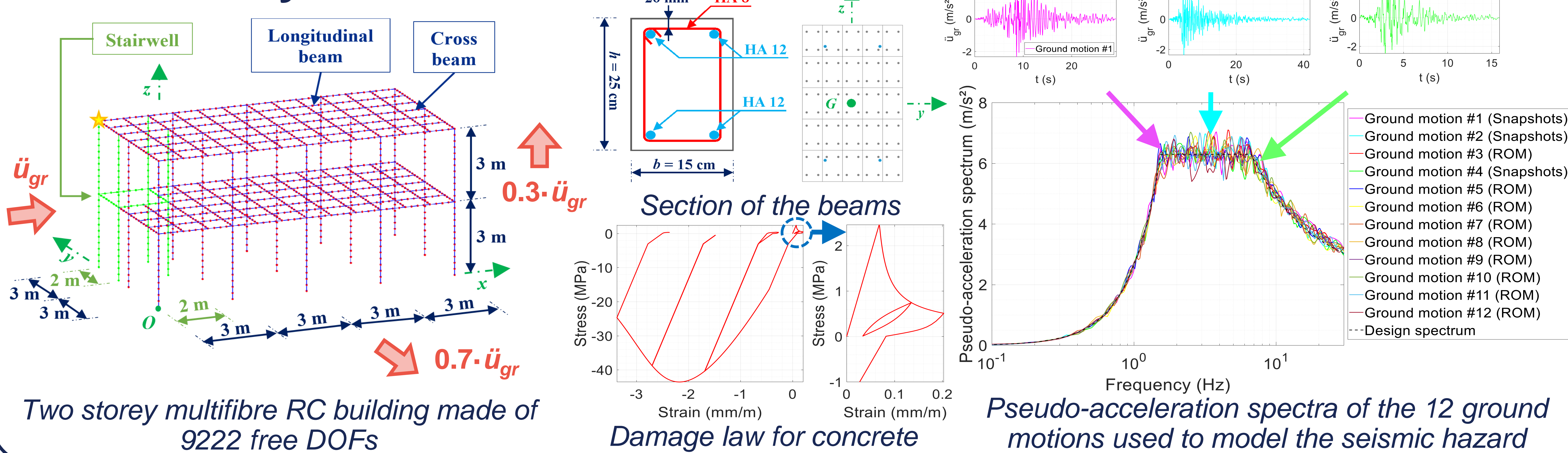
POD-UDEIM MODEL ORDER REDUCTION IN THE CASE OF DAMAGING RC STRUCTURES SUBJECTED TO EARTHQUAKES

B. Bodnar – W. Larbi – M. Titirla – J.-F. Deü – LMSSC – CNAM Paris bastien.bodnar@lecnam.net
 F. Gatuingt – F. Ragueneau – LMPS – ENS Paris Saclay JJCAB 2022 – INSA Lyon – 12th ed. – 17th and 18th November

Earthquake Engineering, Reinforced Concrete, Multifibre Beam Elements, Reduced Order Model (ROM), Proper Orthogonal Decomposition (POD), Unassembled Discrete Empirical Interpolation Method (UDEIM)

Earthquake engineering hybrid testing requires the use of efficient nonlinear ROMs that can be run in real time. To tackle this problem, a POD-UDEIM hyper reduced order model is here associated to a non-iterative α -OS time-integration scheme to speed up FEM analyses on a two-storey RC structure made of damaging multifibre beam elements. In this work, the seismic hazard is modelled by a set of 12 earthquakes fitting the same design spectrum.

Case study



Full order FEM analyses with ground motions #1, #2 and #4

Snapshots

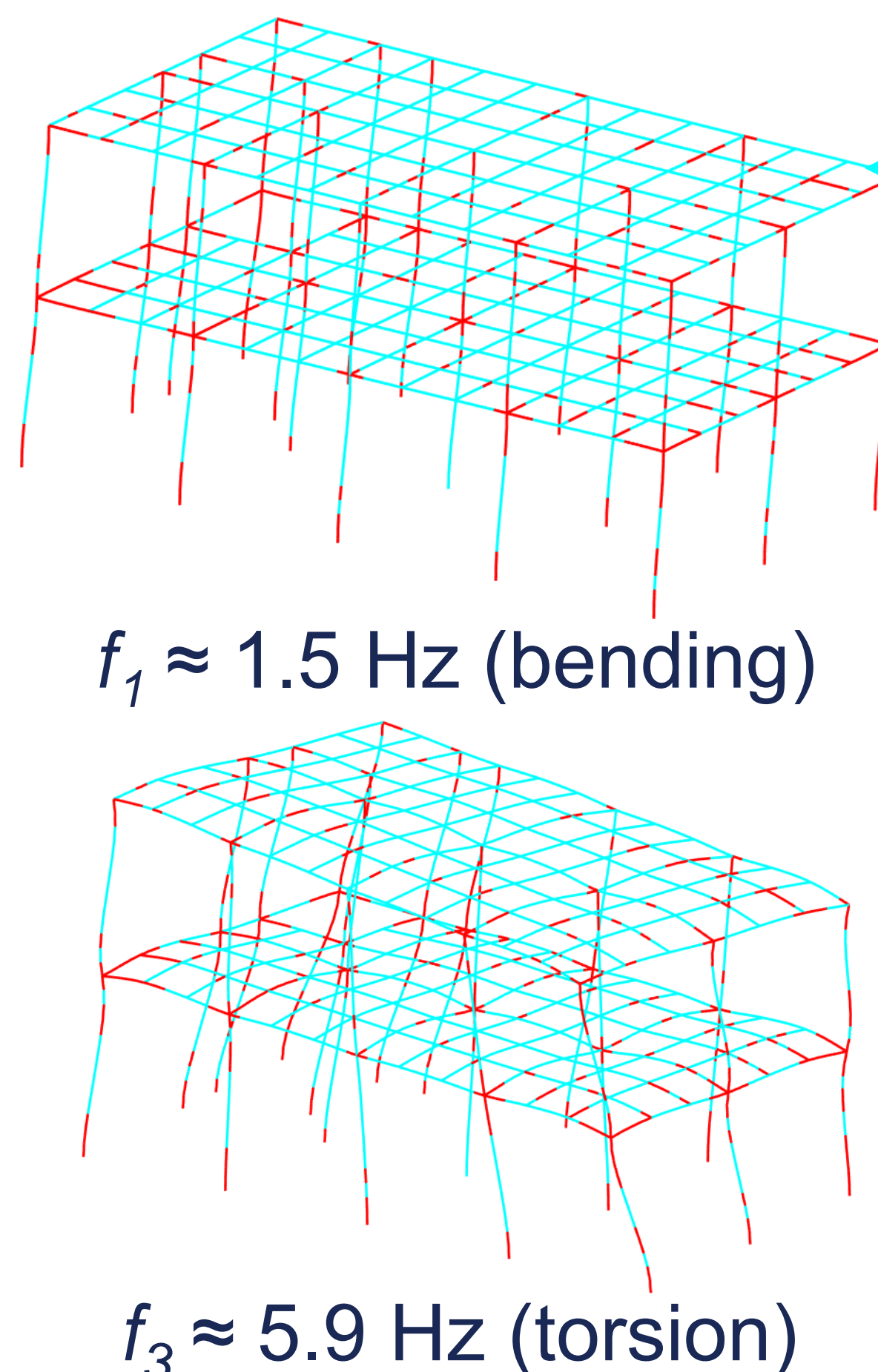
Non iterative α -OS time scheme

$$M \cdot \ddot{u} + C \cdot \dot{u} + K_E \cdot u + \tilde{r}_{NL}(\tilde{u}) = -M \cdot \Gamma \cdot \ddot{u}_{gr}(t)$$

Explicit prediction of the nonlinear part of the restoring force vector

SVD on a set of N snapshots of u

POD-modes



$$u \approx B \cdot q$$

Projection of the displacements on a basis B made of n POD-modes

SVD on a set of N snapshots of \tilde{r}_{NL}

UDEIM-modes

Domain where the restoring forces are interpolated - 1295 elements

Reduced integration domain (RID) - 417 elements

Basis made of m UDEIM-modes

$$A = \Psi \cdot (P^T \cdot \Psi) +$$

Partition matrix related to all the components of the RID

Interpolation operator

$$\tilde{r}_{NL,u} \approx A \cdot \tilde{r}_{NL,u}^{RID}$$

Interpolation of the nonlinear part of the unassembled restoring force vector on the full domain

Online phases

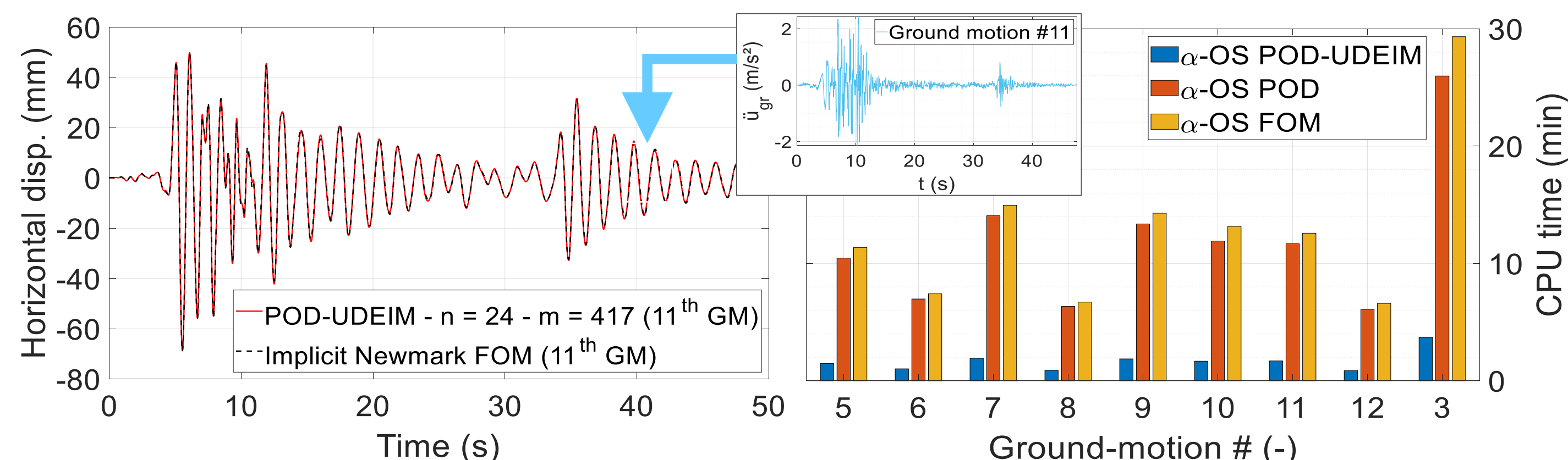
$$1 - \frac{\sum_{i=1}^n \lambda_i}{\sum_{i=1}^N \lambda_i} \leq \varepsilon$$

Singular value related to the i th mode

POD : $\varepsilon = 1 \cdot 10^{-2} \rightarrow n = 24$

UDEIM : $\varepsilon = 1 \cdot 10^{-2} \rightarrow m = 417$

Criterion used to set the number of POD and UDEIM modes



Time savings and error with POD and POD-UDEIM ROM

Ground motion	#3	#5	#6	#7	#8	#9	#10	#11	#12
Error/Implicit NM (%)	0.2	0.1	0.2	0.3	0.2	0.3	0.3	0.2	0.6
Time saving POD (%)	11	8	6	6	6	6	10	7	8
Time saving POD-UDEIM (%)	87	87	86	87	87	87	87	87	87

The error is less than 0.6 % with a 87 % time saving during each online phase.

Reduced order FEM analyses with ground motions #3 and #5 to #12

References

- Ayoub N., Deü J.-F., Larbi W., Pais J., Rouleau L. Application of the POD method to nonlinear dynamic analysis of reinforced concrete frame structures subjected to earthquakes. *Engineering Structures*, 270, 114854 (9 pages), 2022.
- Kotronis P., Davenne L., Mazars J. Poutre multifibre Timoshenko pour la modélisation de structures en béton armé. *Revue Française de Génie Civil*, 8(2-3):329-343, 2004.
- Nakashima M., Kato H., Takaoka E. Development of real-time pseudo dynamic testing. *Earthquake Engineering and Structural Dynamics*, 21(1):79-92, 1992.
- Richard B., Ragueneau F. Continuum damage mechanics based model for quasi brittle materials subjected to cyclic loadings. *Engineering Fracture Mechanics*, 98, 383-406, 2013.
- Tiso P., Rixen D. J. Discrete empirical interpolation method for finite element structural dynamics. In: *Topics in Nonlinear Dynamics, Volume 1*. Springer, 2013, pp. 203-212.